

FILE NO.

REVISIONS			
REV	DESCRIPTION	DWN	CHK APP
5	UPDATE TO NEW STANDARDS	JEC	KTL HA
DATE: 08/03/11			

BILL OF MATERIAL P/N: NL20A

ITEM	QTY	PART NO.	DESCRIPTION	DWG. NO.
1	1	NL20	LADDER 20' STD 1.13 15"OC	SK680905
2	REF	SEE CHART	LADDER BRACKET HARDWARE KIT	SEE CHART
3	2	KY95	PLATE SPLICE .25X1.5X3.5"	SK680905
4	10	210018GA	BOLT ASSY 1/2 X 1-1/2 HSB A325	N/A
5	12	210019GAW	BOLT ASSY 1/2 X 1-3/4 A325 W/W	N/A
6	18	110202	Hardened Washer 1/2 (F436)	N/A

BILL OF MATERIAL P/N: NL10A

ITEM	QTY	PART NO.	DESCRIPTION	DWG. NO.
1	1	NL10	LADDER 10' STD 1.13 WIDE	SK680905
2	REF	SEE CHART	LADDER BRACKET HARDWARE KIT	SEE CHART
3	2	KY95	PLATE SPLICE .25X1.5X3.5"	SK680905
4	8	210018GA	BOLT ASSY 1/2 X 1-1/2 HSB A325	N/A
5	8	210019GAW	BOLT ASSY 1/2 X 1-3/4 A325 W/W	N/A
6	12	110202	Hardened Washer 1/2 (F436)	N/A

ORDERING INFORMATION

- 3 - BRACKET ASSY WITH EACH 20' LADDER SECTION (PT. NO. NL20A)
- 3 - BRACKET ASSY WITH EACH 10' LADDER SECTION (PT. NO. NL10A)

LADDER BRACKET SCHEDULE

LEG SIZE	BRACKET ASSY PT. NO.	BRACKET PT. NO. (1 REQ'D)	BRACKET FAB DWG. NO.	LEG U-BOLT ASSY (1 PER BRACKET)	BOLT ASSY PT. NO. (2 PER BRACKET)	PT. NO. KY599 EXT. PLATE QUANTITY	SECTION A-A VIEW NO.	SADDLE CLAMP (1 REQ'D)
15/16" Ø BAR	KY615	KY605	SK680905	-	3/8 X 4 W/WASHER	2	1	KH323
1 1/4" Ø BAR	KY615	KY605	SK680905	-	3/8 X 4 W/WASHER	2	1	KH323
1 7/16" Ø BAR	KY615	KY605	SK680905	-	3/8 X 4 W/WASHER	2	1	KH323
2" PIPE	KY615	KY605	SK680905	-	3/8 X 4 W/WASHER	2	1	KH323
2 1/4" TUBE	KY615	KY605	SK680905	-	3/8 X 4 W/WASHER	2	1	KH323
2 1/2" PIPE	KY615	KY605	SK680905	-	3/8 X 4 W/WASHER	2	1	KH323
3" TUBE	KY615	KY605	SK680905	-	3/8 X 4 W/WASHER	2	1	KH323
3" PIPE	KY616	KY605	SK680905	JR64AW	-	2	2	-
3 1/2" PIPE (MID & BOTTOM BRACKET)	KY617	KY604	SK680905	JR62AW	-	2	2	-
4" PIPE	KY618	KY604	SK680905	JR63AW	-	2	2	-
5" PIPE	KY619	KY605	SK680905	JR86A	-	2	2 & 3	-
6" PIPE	KY620	KY604	SK680905	JR87A	-	2	2 & 3	-
8" PIPE	KY621	KY601	SK680905	J905A	-	2	2 & 3	-
10" PIPE	KY622	KY600	BB00309	JR110A	-	2	4	-
12" PIPE	KY623	KY543	B790799	JR120A	-	-	5	-

NOTE: IT IS RECOMMENDED THAT A SAFETY DEVICE BE PROVIDED WITH LADDER INSTALLATIONS FOR ADDED CLIMBER SAFETY.

GENERAL NOTES:

- FLAT WASHERS ARE PROVIDED FOR ALL SLOTTED HOLES.
- PAL NUTS ARE PROVIDED FOR ALL BOLTS. SEE DRAWING A790135 FOR BOLT ASSEMBLY INSTALLATION.
- FABRICATION DRAWINGS, IF REFERENCED, ARE FOR SHOP USE ONLY. AN ADDITIONAL 10' OF LADDER IS PROVIDED FOR ALL TOWERS 200' AND OVER. LADDER TO BE FIELD CUT TO PROPER LENGTH AFTER INSTALLATION.
- LADDERS FOR GUYED TOWERS ARE TO BE ORIENTED SO THAT THE LADDER RUNGS PARALLEL THE TOWER FACE.
- THIS DIMENSION MUST BE ADJUSTED TO KEEP THE LADDER SIDE RAIL IN STRAIGHT LINE AND MAINTAIN 15" ON CENTER RUNG SPACING.
- ALL DRAWINGS SUBMITTED ARE LATEST REVISIONS.

LEG MOUNT LADDER ASSEMBLY

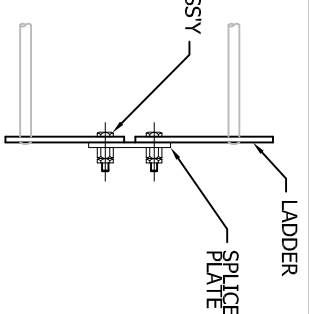
DWN:	WRF	CHK'D:	TWS	DATE:	SEP/21/1998
ENGR:	MDI	SHEET #:	1 OF 1	REV:	5
DRAWING NO:	D800041				

PO BOX 5999
 PEORIA, IL 61601-5999
 TOLL FREE 800-727-ROHIN



THIS DRAWING IS THE PROPERTY OF ROHIN. IT IS NOT TO BE REPRODUCED, COPIED OR TRACKED IN WHOLE OR IN PART WITHOUT OUR WRITTEN CONSENT.

SPICE DETAILS



SADDLE CLAMP
 PT. NO. KH323
 (PROVIDED W/
 BRACKET ASSY)
 LADDER
 PT. NO. KY615

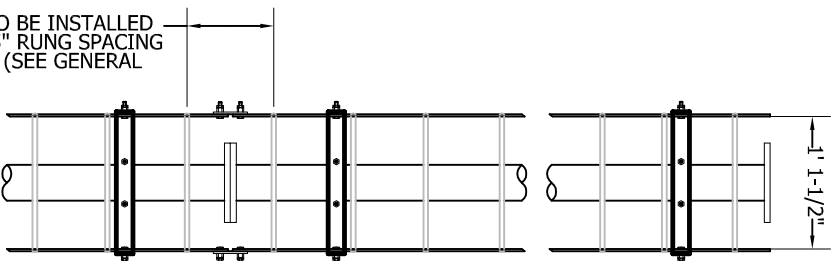
3/8 X 4 BOLT ASSY
 W/WASHER

LADDER BRACKET

EXTENSION
 PLATE

SECTION A - A

(VIEW NO. 1)
 FOR 15/16" THRU 3" O.D. LEGS



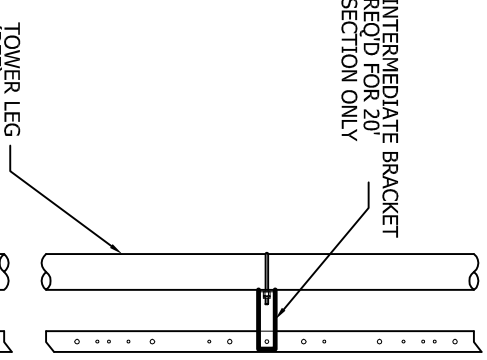
LADDER TO BE INSTALLED WITH A 15" RUNG SPACING AT SPLICE (SEE GENERAL NOTE # 6)

1/2 X 1-3/4 BOLT ASSY
 W/WASHERS BOTH SIDES (TYP.)

SECTION A-A

(VIEW NO. 2)
 FOR 3", 3-1/2" & 4" PIPE
 5" PIPE (MID & BOTTOM BRACKET)
 6" PIPE (MID & BOTTOM BRACKET)
 8" PIPE (TOP BRACKET)

1/2 x 1 1/2 BOLT ASSY



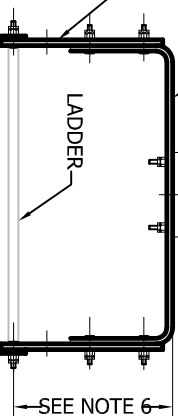
LEG U-BOLT ASSY
 (SEE CHART FOR PT. NO.)

LADDER BRACKET

EXTENSION
 PLATE

SECTION A - A

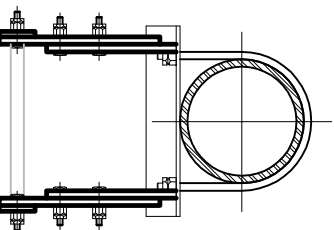
(VIEW NO. 3)
 FOR 5" PIPE (BOTTOM BRACKET)
 6" PIPE (BOTTOM BRACKET)
 8" PIPE (MID & BOTTOM BRACKET)



SEE NOTE 6

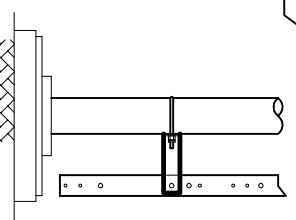
SECTION A - A

(VIEW NO. 4)
 FOR 10" PIPE



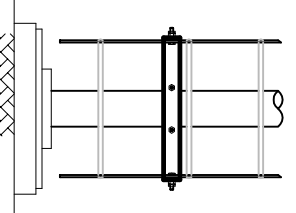
LADDER ELEVATION

SIDE VIEW



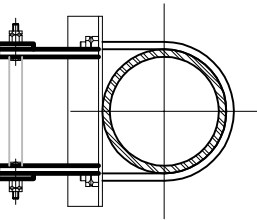
LADDER ELEVATION

FRONT VIEW



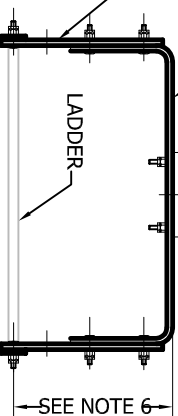
SECTION A - A

(VIEW NO. 5)
 FOR 12" PIPE



SECTION A - A

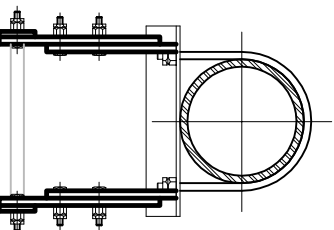
(VIEW NO. 3)
 FOR 5" PIPE (BOTTOM BRACKET)
 6" PIPE (BOTTOM BRACKET)
 8" PIPE (MID & BOTTOM BRACKET)



SEE NOTE 6

SECTION A - A

(VIEW NO. 4)
 FOR 10" PIPE



INTERMEDIATE BRACKET
 REQ'D FOR 20'
 SECTION ONLY

LADDER BRACKET
 W/EXTENSION PLATE

LADDER

1'-1-1/2"

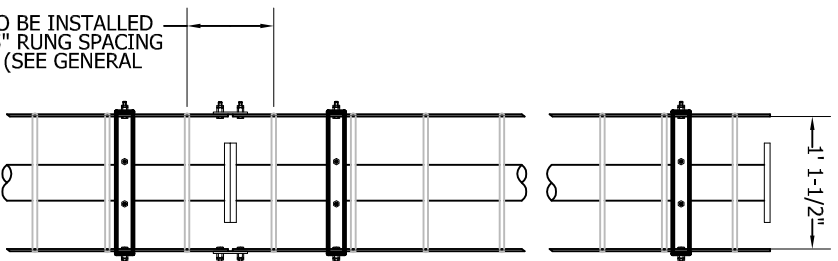
1/2 X 1-3/4 BOLT ASSY
 W/WASHERS BOTH SIDES
 (TYP ALL EXT. PLATES)

LADDER BRACKET

EXTENSION
 PLATE

SECTION A - A

(VIEW NO. 1)
 FOR 15/16" THRU 3" O.D. LEGS



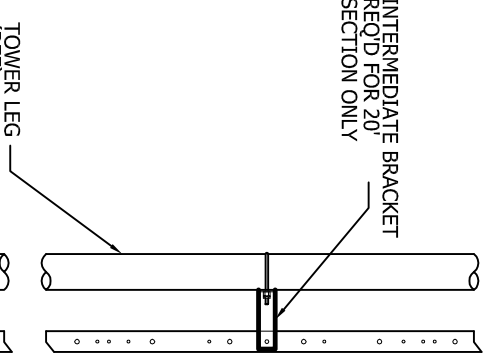
LADDER TO BE INSTALLED WITH A 15" RUNG SPACING AT SPLICE (SEE GENERAL NOTE # 6)

1/2 X 1-3/4 BOLT ASSY
 W/WASHERS BOTH SIDES (TYP.)

SECTION A-A

(VIEW NO. 2)
 FOR 3", 3-1/2" & 4" PIPE
 5" PIPE (MID & BOTTOM BRACKET)
 6" PIPE (MID & BOTTOM BRACKET)
 8" PIPE (TOP BRACKET)

1/2 x 1 1/2 BOLT ASSY



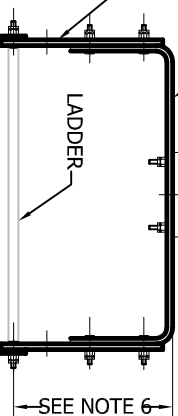
LEG U-BOLT ASSY
 (SEE CHART FOR PT. NO.)

LADDER BRACKET

EXTENSION
 PLATE

SECTION A - A

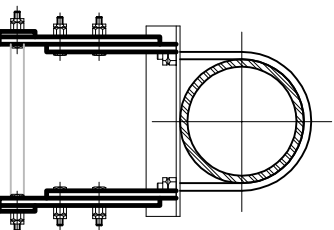
(VIEW NO. 3)
 FOR 5" PIPE (BOTTOM BRACKET)
 6" PIPE (BOTTOM BRACKET)
 8" PIPE (MID & BOTTOM BRACKET)



SEE NOTE 6

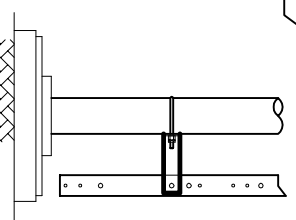
SECTION A - A

(VIEW NO. 4)
 FOR 10" PIPE



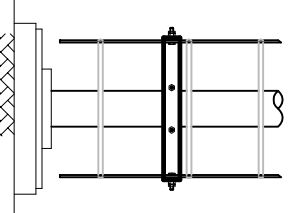
LADDER ELEVATION

SIDE VIEW



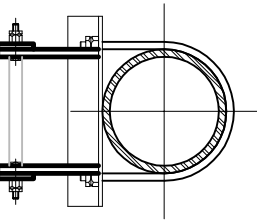
LADDER ELEVATION

FRONT VIEW



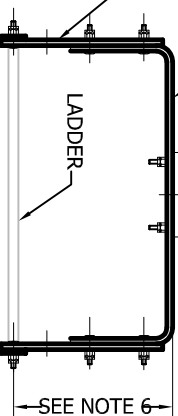
SECTION A - A

(VIEW NO. 5)
 FOR 12" PIPE



SECTION A - A

(VIEW NO. 3)
 FOR 5" PIPE (BOTTOM BRACKET)
 6" PIPE (BOTTOM BRACKET)
 8" PIPE (MID & BOTTOM BRACKET)



SEE NOTE 6

SECTION A - A

(VIEW NO. 4)
 FOR 10" PIPE

