



1603 TRAFFIC CONTROL **BARRIER GATE** AUTO SPIKE SYSTEM

• COMMERCIAL • INDUSTRIAL • MAXIMUM SECURITY



- Transfer box mechanically links the 1603 barrier operator to the traffic spikes
- Spike and tunnel sections are available in 3 foot sections
- End cap provides a smooth end to the spike section
- Optional signal light (red/green) is synchronized with the barrier arm
- Optional warning sign warns drivers to proceed only when spikes are retracted
- 5 year limited factory warranty on operator
- 1 year limited warranty on transfer box, tunnel sections, spike sections, and end cap



automatic sequencing
when used in conjunction with slide or swing gate operators



spikes
available in 3 foot sections



transfer box
provides direct mechanical linkage



surface mount
spikes install easily without trenching and double as a speed bump

1603 TRAFFIC CONTROL BARRIER GATE AUTO SPIKE SYSTEM

1 Operator

15.25" W x 43.5" H x 15.5" D
(387mm W x 1105mm H x 394mm D)

- 1/2 HP, 115, 230, 460 VAC *
- Mechanically links operator arm to the transfer box/ spike system.

* 230 and 460 VAC units use a step-down transformer to achieve 115 VAC operating voltage.

2 Transfer Box

surface mount

15" W x 4" H x 15.5" D
(381mm W x 101.6mm H x 394mm D)

- Transfer box provides a mounting platform for the operator and links the operator to the spike units.

3 Tunnel Section

surface mount

20" W x 2" H x 36" L
(508mm W x 50.8mm H x 914mm L)

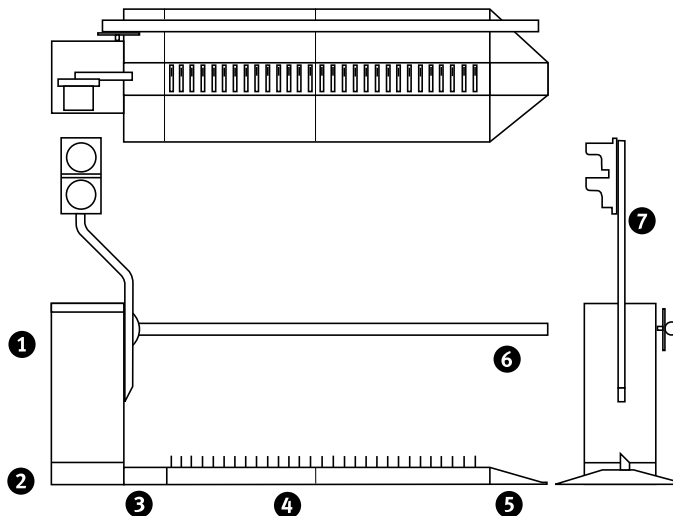
- Tunnel sections provide an extended connection from the transfer box to the spike sections.
- Tunnel sections can be mixed to create the desired length and are used when the 1603 is set back from the curb.

4 Spike Section

surface mount

20" W x 2" H x 36" L
(508mm W x 50.8mm H x 914mm or 1829mm L)

- Spike sections can be mixed to create the desired length. For example, 3' sections can be combined for an overall 6', 9', or 12' spike section.



5 End Cap

20" W x 2" H x 7" D
(508mm W 50.8mm H x 177.8mm D)

- Provides a smooth end to the spike section.

6 Barrier Arm

- 14-foot round (3") aluminum arm painted white with yellow/black visibility tape.
- 14-foot 1x4 wood arm painted white with yellow/black visibility tape.

7 Signal Light (option)

9.75" W x 21" H x 14" D
(247mm W x 533mm H x 355mm D)

(includes lens shield)

- 115 VAC
- 8" Red and Green lenses
- 8000 hour / 67 watt traffic bulbs
- Mounting bracket for easy attachment to the 1603 operator
- 1 year limited warranty

Warning Sign (option)

24" W x 24" H x 8" D
(610mm W x 610mm H x 203mm D)

- 115 VAC
- Two 20 watt fluorescent lamps and one 150 watt flood lamp
- Light sensor turns sign on at dusk, off at dawn
- 2 year limited warranty

Traffic signal and/or warning sign must be used with this system.

WARNING:
Traffic control auto-spike systems are not intended to be used in areas where vehicular traffic is uncontrolled or crosses over the spikes at an angle other than 90°, or where traffic speeds may exceed 5 MPH. Speed bumps, warning signs and/or traffic signals must be used with auto-spike systems.

Technical Features

Mechanical

Primary Reduction is provided by a worm gear reduction system running in a continuous oil bath

G90 galvanized steel housing, painted white rated NEMA 4x

Fail-secure mechanical release method, and hand crank allows lowering of the spikes in the event of a power outage

Options

DC powered convenience open system that will cause the arm to raise automatically in the event of a power outage

Heater/fan kits for extreme weather conditions

Electrical

Magnetic electronic limit controls

Auto-close timer 1-23 seconds

Up input memory buffer

Down memory option

Multiple up commands

Ports for plug-in open (up) and reverse (down) loop detectors. DKS plug-in detectors only

Ports for plug-in loop detectors

Auto-sequencing in conjunction with slide or swing

Built-in power On/Off switch

115 VAC convenience outlet for accessory transformers

Gate Tracker™ reporting output provides operator data to access control system (DKS 1833, 1835, 1837 or 1838 only)

Miscellaneous

Environmental: 10°F to 115°F (-12°C to 46°C)

Thermostatically controlled heater kit recommended for colder environments



Access Control Solutions since 1948

MEMBER:



DOORKING®, INC.

120 Glasgow Avenue, Inglewood, California 90301 U.S.A.
Tel: 310-645-0023 FAX: 310-641-1586 www.doorking.com

© 2012 All Rights Reserved. Product specifications may change without notice.
Rev.11/12

Distributed by: