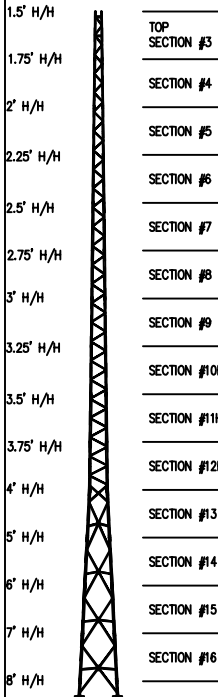


140FT S310 SUPERTITAN TOWER



TOP SECTION #3  
SECTION #4  
SECTION #5  
SECTION #6  
SECTION #7  
SECTION #8  
SECTION #9  
SECTION #10HD  
SECTION #11HD  
SECTION #12HD  
SECTION #13  
SECTION #14  
SECTION #15  
SECTION #16

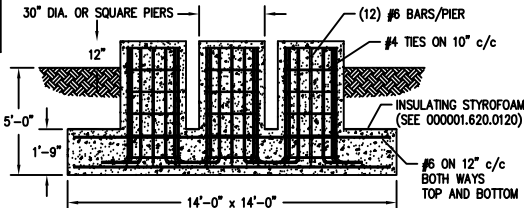
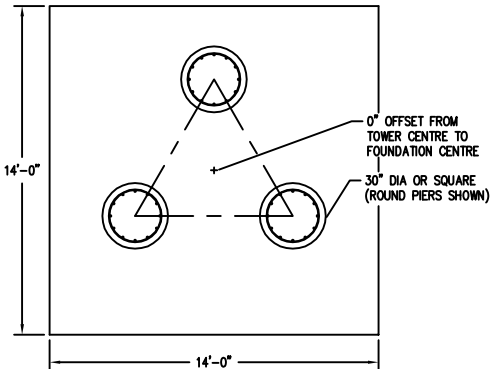
U S A	MAXIMUM ALLOWABLE ANTENNA AREA - PER TIA/EIA 222 REV. F					
	WIND VELOCITY RATINGS					
	NO ICE (ROUND/FLAT)			1/2" ICE (ROUND/FLAT)		
	70 mph	90 mph	100 mph	70 mph	90 mph	100 mph
	26/18	--/--	--/--	20/14	--/--	--/--

**FOUNDATION LOADS:**  
 MAX. OVERTURNING MOMENT (K\*FT) =  
 MAX. SHEAR (kips) =  
 MAX. AXIAL (kips) =

U S A	MAXIMUM ALLOWABLE ANTENNA AREA - PER TIA/EIA 222 REV. G, CLASS 1 (NO ICE)					
	WIND VELOCITY RATINGS					
	90 mph 3sg	110mph 3sg	120 mph 3sg	3sg = 3 SECOND GUST WINDSPEED FM = FASTEST MILE WINDSPEED		
	75 mph FM	90 mph FM	100 mph FM			
	ROUND	FLAT	ROUND	FLAT	ROUND	FLAT
24	17	--	--	--	--	

**FOUNDATION LOADS:**  
 MAX. OVERTURNING MOMENT (K\*FT) =  
 MAX. SHEAR (kips) =  
 MAX. AXIAL (kips) =

FOUNDATION DESIGN (NORMAL DRY SOIL)



CUBIC YARDS of CONCRETE				
PAD	RND PIER	SQ PIER	TOTAL RND	TOTAL SQ
12.70	0.77	0.98	15.02	15.66

REV.	BY:	BY:	DESCRIPTION	DATE
	REV.	CHK.		

REFERENCE DRAWINGS:

DRAWING NUMBER	DRAWING NUMBER

CONFIDENTIAL: ALL INTELLECTUAL PROPERTY RIGHTS HEREIN ARE THE PROPERTY OF TRYLON INC. ALL DUPLICATION, RECORDING, DISCLOSURE OR USE IS PROHIBITED WITHOUT WRITTEN CONSENT OF TRYLON INC.

**Trylon**

DRAWING NO. 000001.620.0453

CUSTOMER: SITE: SCALE: 220.000

DATE: 16 APR 07 BY: CHK: APP:

TITLE: 140FT S310 SUPERTITAN PROFILE

NOTES: 1) KNOCK-DOWN PART NUMBER 5.94.0310.140.  
 2) PRE-ASSEMBLED PART NUMBER: NOT AVAILABLE.  
 3) ANTENNA LOADS ARE CENTRALLY LOCATED AND BALANCED, 3-FT OR LESS ABOVE THE TOWER TOP.  
 4) WIND LOADING ASSUMES (1) 1/2" TRANSMISSION LINE PER 10 SQ.FT. OF ROUND MEMBER ANTENNA AREA.